

 CHANNEL VISION™

by



Introducing  
**ULTIMO 1,  
ULTIMO 2  
& ULTIMO 3**  
Multi-Room Audio



# ULTIMO 1 By CHANNEL VISION™

## High Powered Multi-Room Audio System

### A0240 40 Watt Stereo Amplifier

Channel Vision's **Ultimo** High Powered Audio System, distributes highly affordable, high quality audio throughout the home. The kit, expandable to 8 zones, is ideal for distributing just about any audio source, even iPod music, all around the house.

Let your music follow you as you move through the house, playing through dedicated speakers in each room.

The innovative, D Class, power amplifier is easy to conceal, making installation simple and tidy. The distribution hub and amplifier fit easily into a structured cabling enclosure while the volume controls fit into any 90mm stud depth wall.



#### Features :

- 40 Watts per channel amplifier
- 1 Source / 4 zones
- Individual volume control per zone
- Auto sensing power shut off
- Easy Installation
- 4 pairs 6.5" coaxial speakers included
- Incredible value
- Expandable to 8 Zones

#### Specifications : (typical at 25 °c)

- Power input :** 110-240VAC 50/60 Hz  
**Power Output :** 40 Watts per Channel RMS into 6 ohms.  
**Frequency Response ;** 20-20KHz (+/- 3dB)  
**Signal to Noise Ratio :** >85dB



Channel Vision Central Structured Wiring



Channel Vision PRO IR & Audio Equipment



ARIA™ Multi-Room Audio



Channel Vision Technology Modulators, Cameras, Intercoms

# CHANNEL VISION™

A

Tel : (03) 9555-6335.  
Web : [cvplus.com.au](http://cvplus.com.au)  
Email : [sales@cvplus.com.au](mailto:sales@cvplus.com.au)



Product



# ULTIMO 2 By CHANNEL VISION™

## High Powered Multi-Room Audio System IR-2005/VC-300 IR & Volume Control Panel

Channel Visions **Ultimo** IR-2005/VC-300 in wall IR and Volume panel is the primary source and volume control device for each room.

**Ultimo** provides convenient control via a hand held remote control of such instructions as song select on iPod or channel choice on Foxtel while at the same time allowing volume levels to be controlled in each room.

Now you can take control at an amazing price.



### Features :

- 40 Watts per channel amplifier
- 1 Source / 4 zones
- IR control of source per zone
- Plasma Proof IR system
- Individual volume control per zone
- Auto sensing power shut off
- Easy Installation
- 4 pairs 6.5" coaxial speakers included
- Incredible value
- Expandable to 8 Zones

**Audio Specifications :** (typical at 25 °c)  
**Power input :** 110-240VAC 50/60 Hz  
**Power Output :** 40 Watts per Channel  
 RMS into 6 ohms.  
**Frequency Response ;** 20-20KHz (+/- 3dB)  
**Signal to Noise Ratio :** >85dB



# ULTIMO 3 By CHANNEL VISION™

## High Powered Multi-Room Audio System

### RX-4100 4 Source / 4 Zone System

The **Ultima 3**, is a 4 Source/4 zone audio system that is ideal for those installations that don't require matrix switching.

At the heart of this system is a high power, 4 input plus FM/AM pre-select amplifier that allows for remote control of most functions from any room where control panels are fitted.

Universal control of both Bass and Treble is standard. Choose from IR/Volume panels & Volume only panels, always achieving that special Channel Vision result.

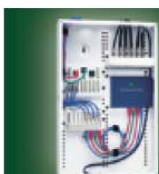


#### Features :

- 100 Watts per channel amplifier
- 4 Source / 4 zones expandable to 8 zones
- Possible IR control of source in all zones
- Plasma Proof IR system
- Individual volume control per zone
- Auto sensing power shut off
- Easy Installation
- 4 pairs 6.5" coaxial speakers included
- 30 station pre-select FM/AM tuner
- Sleep Timer.

#### Audio Specifications : (typical at 25 °c)

- Power input :** 110-240VAC 50/60 Hz  
**Power Output :** 100 Watts per Channel RMS into 6 ohms.  
**Frequency Response ;** 20-20KHz (+/- 3dB)  
**Signal to Noise Ratio :** >85dB



Channel Vision Central  
Structured Wiring



Channel Vision IR &  
Audio Equipment



ARIA™  
Multi-Room Audio



Channel Vision Technology  
Modulators, Cameras, Intercoms

CHANNEL VISION™

A

Tel : (03) 9555-6335.  
Web : cvplus.com.au  
Email : sales@cvplus.com.au



Product



# IBUS By CHANNEL VISION™

## Distributed or local AV using iPod A-0313 & A-0314 iPod wall doc

### A-0313 & A-0314 iBus® Wall Dock

Channel Vision's Crescendo™ High Powered CAT5 Audio system distributes powerful, high quality audio throughout the home over standard CAT5 cable. The **A0313** is a local input module for Channel Vision's CAT5 Audio Systems that was specially designed for the Apple® iPod®. The attractive wall mount remains unobtrusive while not in use, yet its support ledge with integrated dock connector slides out easily, ready to dock your iPod at all times.



#### Features :

- Supports standard distributed AV systems
- Offers video output for viewing iPod video or photos on a local TV
- Integrates with an IR receiver for easy control from multiple household locations
- Attractive wall mount remains unobtrusive while not it use
- Fits in a single gang-box
- Holds and charges iPods
- Made for: • iPod video • 4th Generation iPod with iPod photo Click Wheel, iPod mini, 3rd Generation iPod with touch wheel and button

#### Specifications: (typical @25° C)

**Operating Voltage :** 18VDC  
**Cable requirements:** CAT5 or better  
**Operating Temperature:** -10°C to +50°C

Specifications subject to change without notice.

Apple and iPod is are trademarks of Apple, Inc., registered in the U.S. and other countries.

iBus is a registered trademark of Channel Vision Technology.



Channel Vision Central  
Structured Wiring



Channel Vision **PRO**  
IR & Audio Equipment



**ARIA™**  
Multi-Room Audio



Channel Vision Technology  
Modulators, Cameras, Intercoms

**CHANNEL VISION™**  
A

Tel : (03) 9555-6335.  
Web : [cvplus.com.au](http://cvplus.com.au)  
Email : [sales@cvplus.com.au](mailto:sales@cvplus.com.au)



Product

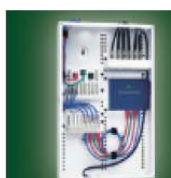


## Aria Speakers - When it's the sound that counts

Channel Vision's **Aria** speaker range is comprised of extremely musical and powerful product that enjoys respect for both its build quality and sound. Engineered in the USA, these speakers are built with high quality materials, ensuring an amazing result.

Room peculiarities are unlikely to pose a challenge to this product, voted "Best Value for Money Speakers" in the USA.

	<p><b>IC-612</b> 6.5" Round In-Ceiling Speakers</p> <ul style="list-style-type: none"> <li>· Woofer: 6.5" Polyprop cone with Butyl rubber surround and 18 oz. magnet</li> <li>· Tweeter: 1" pivoting mylar dome</li> <li>· Sensitivity: 90dB 1W/1m</li> <li>· Power Recommendations: 20 to 160 watts (undistorted)</li> <li>· Impedance: 8 ohms</li> <li>· Frequency Response: 45Hz to 20KHz ± 3dB</li> </ul>		<p><b>IW-601 &amp; IW-801</b> 6.5" &amp; 8" Models mica filled polypropylene woofer &amp; Butyl rubber surround</p> <ul style="list-style-type: none"> <li>• 20oz. magnet</li> <li>• 2nd order crossover, 12dB per octave with thermal-sensing poly switches to prevent blown tweeter</li> <li>• Pivoting tweeter: 1" Teterone dome, neodymium magnet</li> <li>• Frequency response: 35Hz-20KHz ± 3dB</li> <li>• Power handling: 175W</li> <li>• Sensitivity: 90dB(1W/1M)</li> <li>• 8-ohm nominal impedance</li> </ul>
	<p><b>IC-802</b> 8" Round In-Ceiling Speakers</p> <ul style="list-style-type: none"> <li>· Woofer: 8" Polyprop cone with Butyl rubber surround and 24 oz. magnet with 1" pivoting soft dome tweeter</li> <li>· Sensitivity: 90dB 1W/1m</li> <li>· Power Recommendations: 20 to 150 watts</li> <li>· Impedance: 8 ohms</li> <li>· Frequency Response: 40Hz to 20KHz ± 3dB</li> </ul>		<p><b>LCR-525</b> 5-1/4" In-Wall Left-Centre-Right Speakers</p> <ul style="list-style-type: none"> <li>• Dual poly mica cone woofer, real rubber surround, 35mm voice coil</li> <li>• 12dB per octave passive crossover</li> <li>• 1" tweeter w/ neodymium magnet, silk soft dome swivels</li> <li>• Thermal-sensing polymer switches to prevent blown tweeters</li> <li>• Power handling: 150W RMS</li> <li>• Frequency response: 40Hz - 20KHz +/-3dB</li> <li>• 8-ohm nominal impedance</li> </ul>
	<p><b>ID-652</b> 6-1/2" Dual Voice Coil woofer</p> <ul style="list-style-type: none"> <li>• Polypropylene cone with rubber surround.</li> <li>• Dual 1/2" fluid-cooled ultra-wide dispersion Mylar tweeters (swivel independently up to 45°)</li> <li>• Dual 2nd order Butterworth crossover networks</li> <li>• Thermal-sensing polymer switches to prevent blown tweeter; 8-ohm impedance</li> <li>• Power handling: 65W RMS (92W peak)</li> <li>• Frequency response: 55Hz-20KHz ± 3dB</li> <li>• Sensitivity: 89dB (for 2.83 pink noise)</li> </ul>		<p><b>LCR625</b> 6.5" Left-Center-Right Speaker</p> <ul style="list-style-type: none"> <li>• Woofer: Dual 6.5" Mica filled polypropylene with Butyl rubber surround, 20 oz. magnet and 1.25" voice coil</li> <li>• Tweeter: 1" silk soft dome</li> <li>• Sensitivity: 90dB (1W/1M)</li> <li>• Power Handling: 20 to 150 Watts</li> <li>• Impedance: 8 ohms</li> <li>• Frequency range: 40Hz - 20kHz ± 3dB</li> </ul>
	<p><b>ID-850</b> 8" Dual Voice Coil woofer</p> <ul style="list-style-type: none"> <li>• Polyprop cone with true rubber surround</li> <li>• Dual .5" fluid-cooled ultra-wide dispersion Mylar tweeters</li> <li>• Thermal-sensing polymer switches to prevent blown tweeter</li> <li>• 18dB/octave crossover network</li> <li>• Power handling: 75W RMS (106W peak)</li> <li>• Frequency response: 55Hz-20KHz ± 3dB</li> <li>• Sensitivity: 90dB, 8-ohm impedance</li> </ul>		<p><b>OS610</b> 6-1/2" Outdoor Speaker with Butyl rubber surround</p> <ul style="list-style-type: none"> <li>• 1" fluid-cooled silk tweeter</li> <li>• 2nd order Linkwitz-Riley crossover, 12dB slope</li> <li>• Thermal-sensing polymer switches prevents blown tweeters.</li> <li>• Frequency response: 55Hz-20KHz @ 3dB</li> <li>• Recommended power: 10W-150W</li> <li>• 6-ohm nominal impedance</li> <li>• Weather resistant with UV protected cabinet prevent sun fade</li> <li>• Aluminum grilles &amp; brackets and Stainless steel hardware</li> </ul>
	<p><b>IC-607</b> 6-1/2" In Ceiling Speaker</p> <ul style="list-style-type: none"> <li>• Woofer polypropylene cone &amp; treated foam surround, .1" voice coil, 8oz. magnet</li> <li>• 13mm tweeter with mylar dome</li> <li>• Power handling: 70W</li> <li>• Small perforated designer grille</li> <li>• Spring loaded terminals, 14 AWG</li> <li>• Frequency response: 50kHz to 20kHz</li> </ul>		



Channel Vision Central  
Structured Wiring



Channel Vision IR & Audio Equipment



ARIA™  
Multi-Room Audio



Channel Vision Technology  
Modulators, Cameras, Intercoms

**CHANNEL VISION™**

A

Tel : (03) 9555-6335.  
Web : [cvplus.com.au](http://cvplus.com.au)  
Email : [sales@cvplus.com.au](mailto:sales@cvplus.com.au)



Product

NOTES :

Contact us for free System Design and Training

**For help with our products**

*Visit [www.cvplus.com.au](http://www.cvplus.com.au) for more details...*

**call us on (03) 9017-6680  
or (04) 2465-7737**

**E-mail us at :  
[sales@cvplus.com.au](mailto:sales@cvplus.com.au)  
[support@cvplus.com.au](mailto:support@cvplus.com.au)**



**CHANNEL VISION™**

A

